

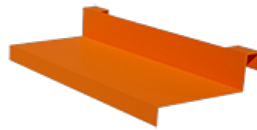


EU TYPE DECLARATION OF PRODUCT CONFORMITY

This Declaration of Conformity is issued under the sole responsibility of the manufacturer:
Portwest, IDA Industrial Park, Westport, Co Mayo, F28 FY88, Ireland. Reg No. 21284

Portwest declares that:

Z635 - Shoe Shelf L11" x W23" -



has been designed and made to the highest standards using top quality components to be used at work in the toughest conditions.

This product is classified as Highest Quality Workwear and does not require certification as it is not designed to provide protection against specific risks such as flame, acid, static electricity or others.

Done at: Portwest, IDA Industrial Park, Westport, F28 FY88, Co. Mayo, Ireland on
[28-Apr-2024]

Signed for and on behalf of Portwest

A blue ink signature of Raymond Carney, written in a cursive style.

Raymond Carney

Chief Operations Officer

Done at: Portwest, IDA Industrial Park, Westport, F28 FY88, Co. Mayo, Ireland on 28-Apr-2024